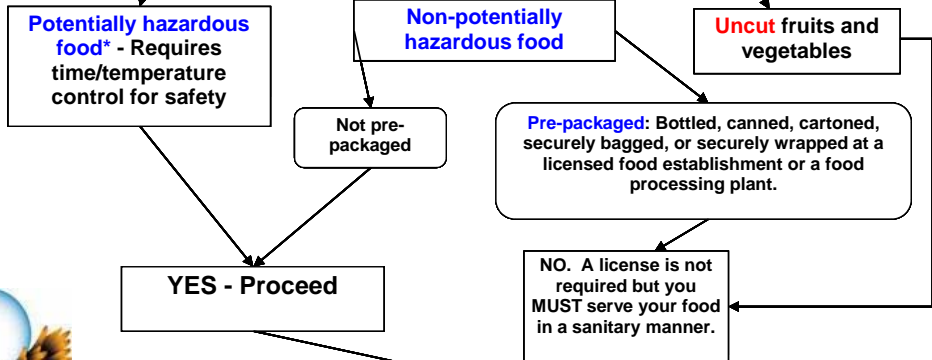
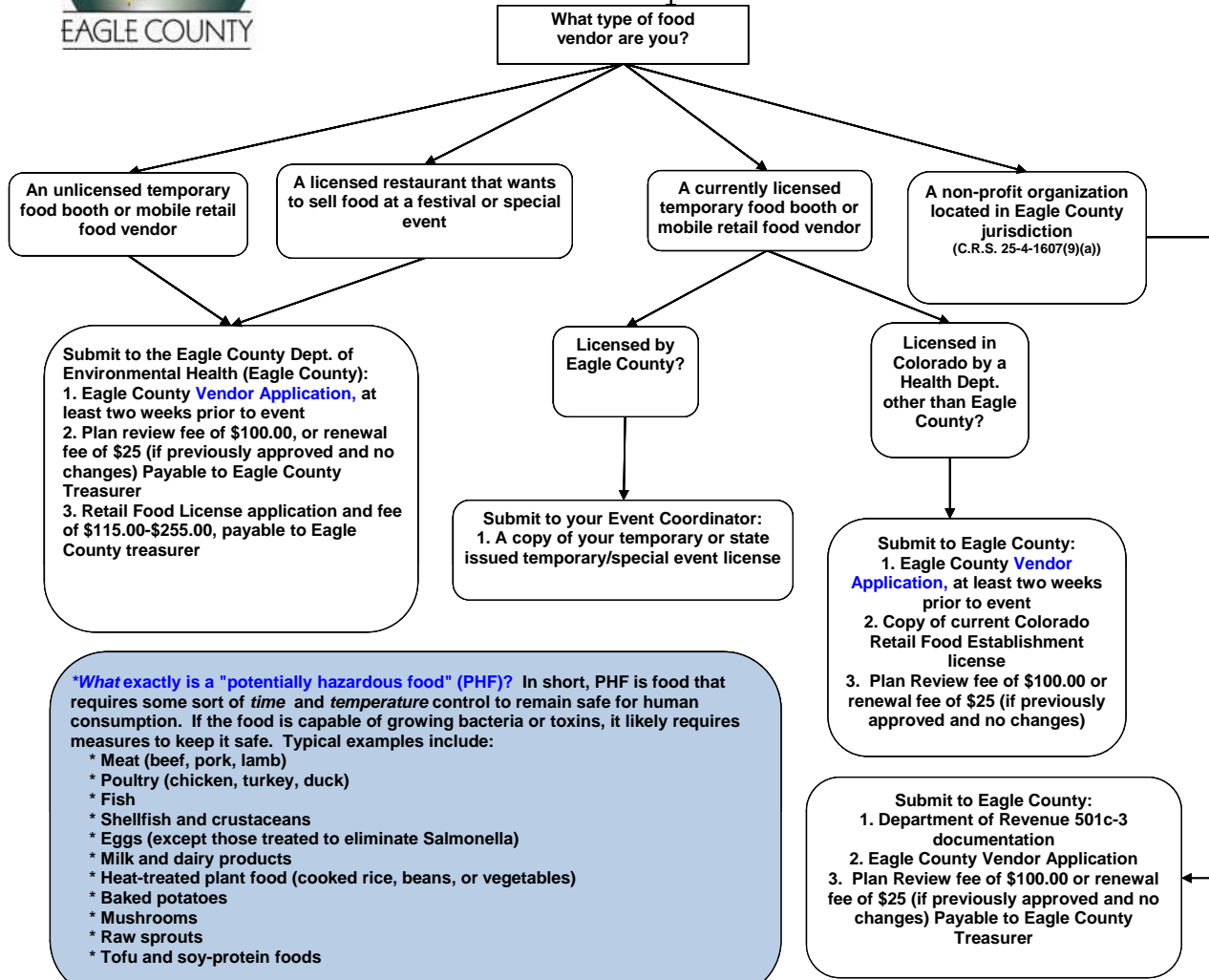




Do I need a temporary/special event license? It depends on the food you plan to serve.



What do I need to DO to get licensed as a TEMPORARY EVENT FOOD VENDOR?



***What exactly is a "potentially hazardous food" (PHF)?** In short, PHF is food that requires some sort of *time* and *temperature* control to remain safe for human consumption. If the food is capable of growing bacteria or toxins, it likely requires measures to keep it safe. Typical examples include:

- * Meat (beef, pork, lamb)
- * Poultry (chicken, turkey, duck)
- * Fish
- * Shellfish and crustaceans
- * Eggs (except those treated to eliminate Salmonella)
- * Milk and dairy products
- * Heat-treated plant food (cooked rice, beans, or vegetables)
- * Baked potatoes
- * Mushrooms
- * Raw sprouts
- * Tofu and soy-protein foods

All of this information and forms are available at www.eaglecounty.us/envhealth
Please contact us if you have any further questions (970) 328-8755.